



Mapping Accessibility with Sapelli

Sapelli's MyAccessibleEU Obstacle Mapper has been developed for people who wish to collect accessibility information in rural locations without mobile signal.

The system developed is a combination of the Sapelli mobile app, GeoKey and Community Maps. Both the mobile app and the online [interactive map](#) lets you record a textual description of the obstacle in question, where it is located, whether it is permanent in nature, and also to take or upload a photo so that people can actually see what the obstacle looks like.

Installing Sapelli Collector and Project

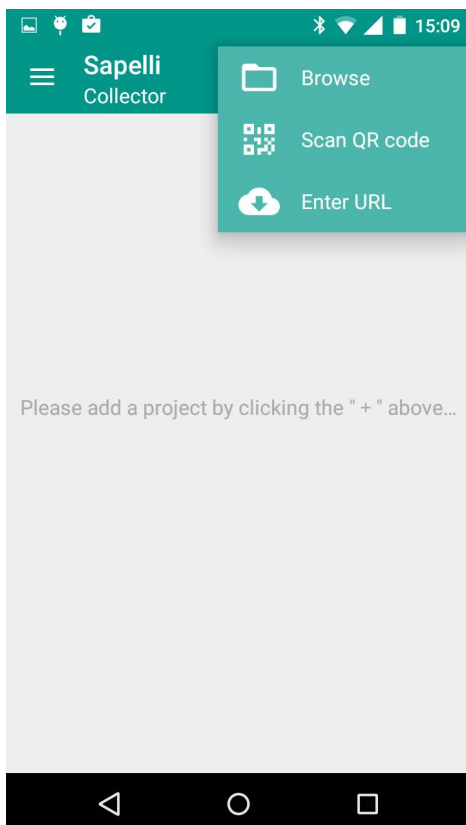
Install the Sapelli app from Google Play:

<https://play.google.com/store/apps/details?id=uk.ac.ucl.excites.sapelli.collector>

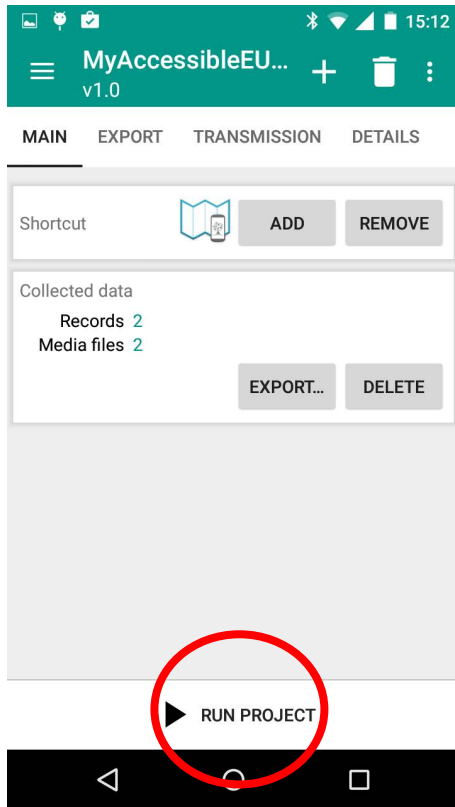
After Sapelli has been installed, you will be presented with the following screen. To load the My Accessible EU project:

Either select 'Enter URL' and enter the following link: <https://goo.gl/A66pCg>

Or select 'Scan QR Code', and scan the image below .

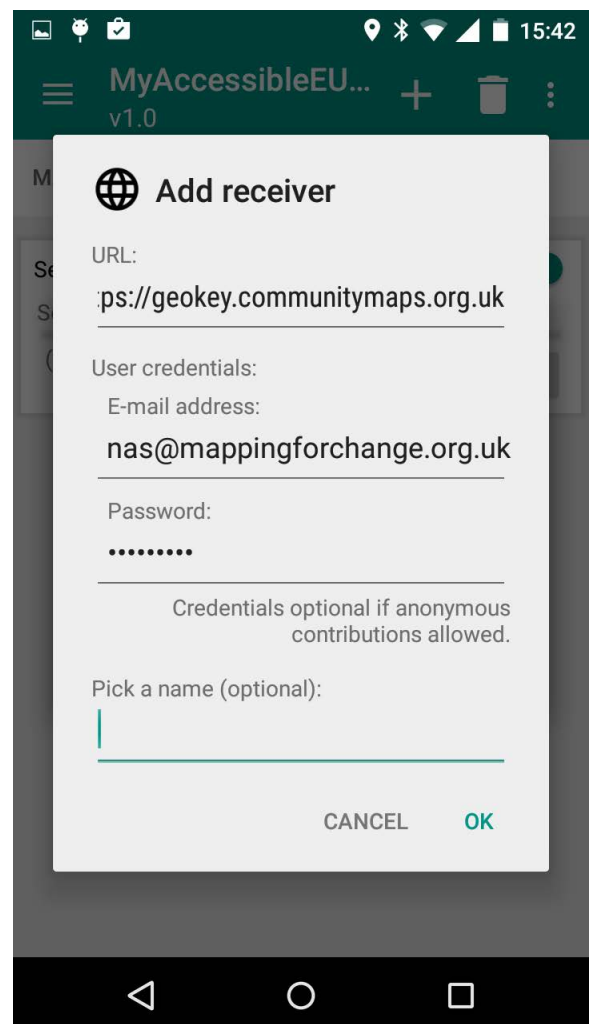
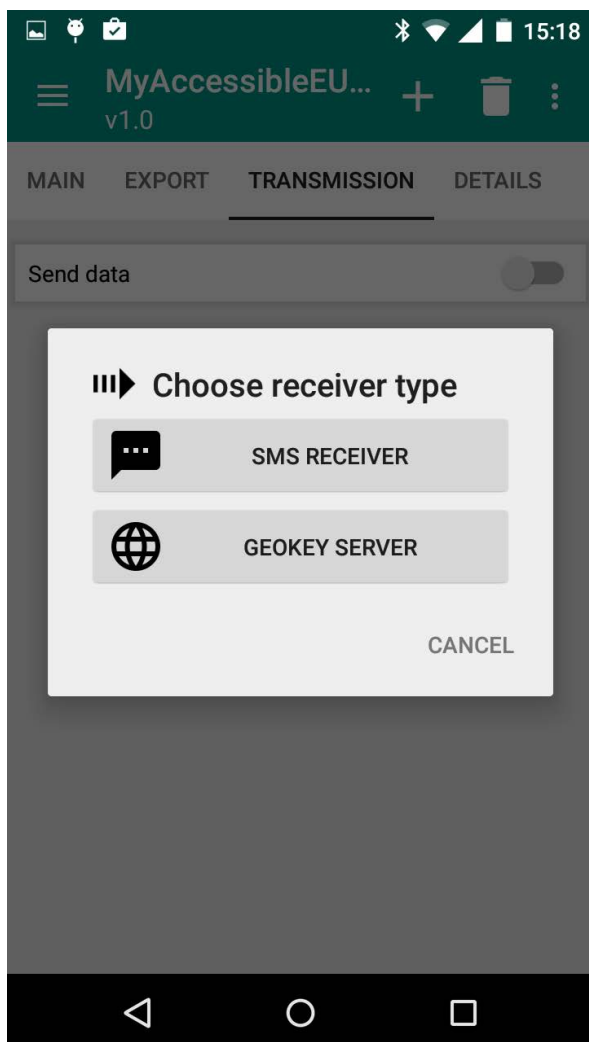


This will present the following screen. Select 'Run Project', and the installed project will appear and you can now begin tagging obstacles.



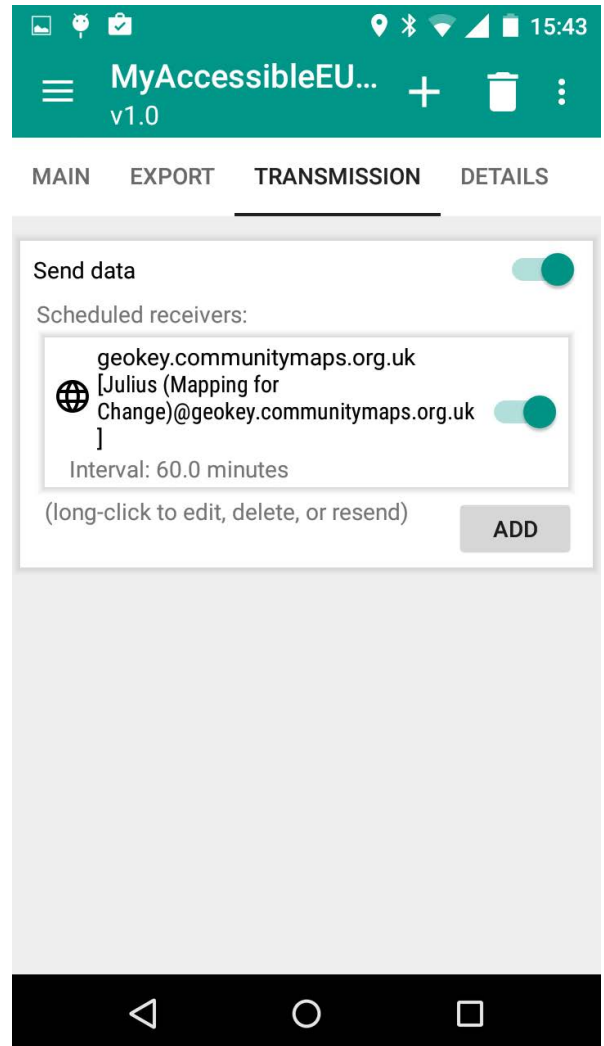
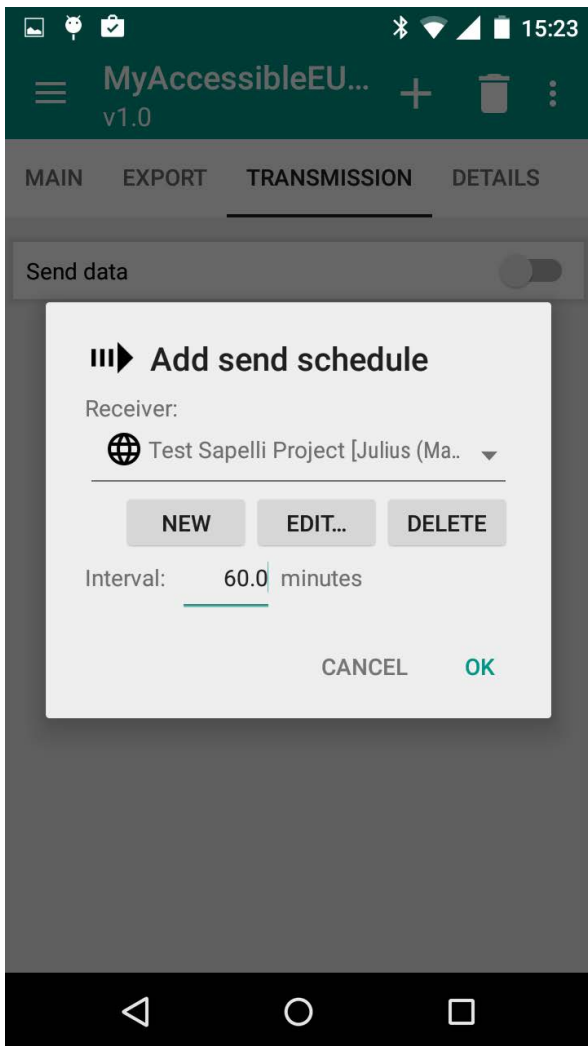
Set-up data receiver

1. In order to send data collected from the Sapelli application to the web map you have to select **GeoKey** server as you receiver type from the options provided.
2. First, click on **Transmission** from the menu tab and slide the **Send Data** button so it's set to green.
3. In the new pop-up window click on **New** to choose the receiver type and select **GeoKey** from the options provided. Here you will need to type the server url: <https://geokey.communitymaps.org.uk>
User credentials are not required in this instance but for some projects they are required. You could select to choose a memorable name for the receiver, then click **OK**.



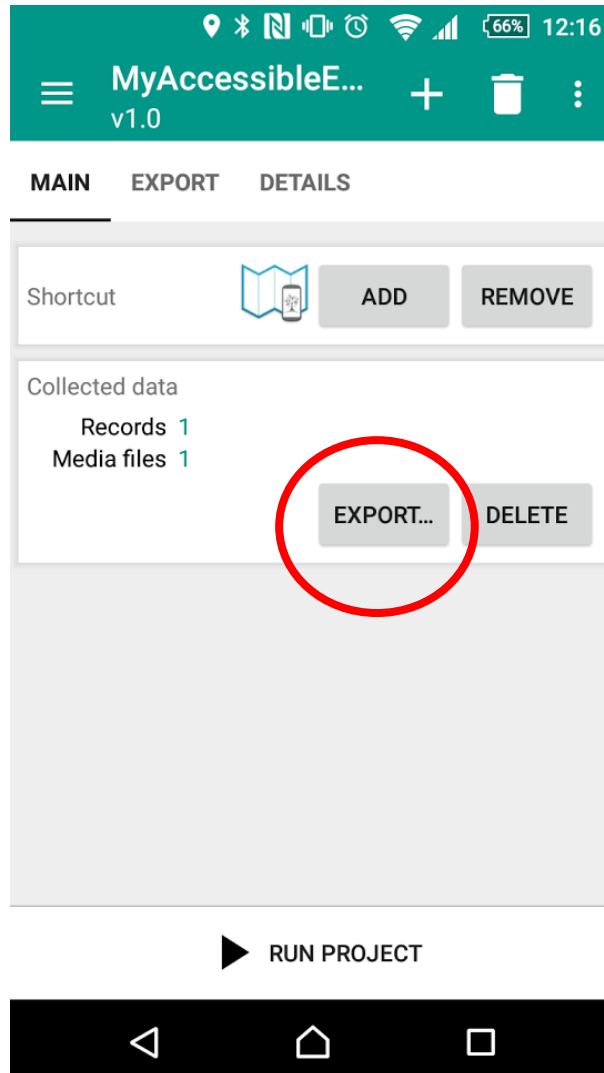
Set-up send schedule

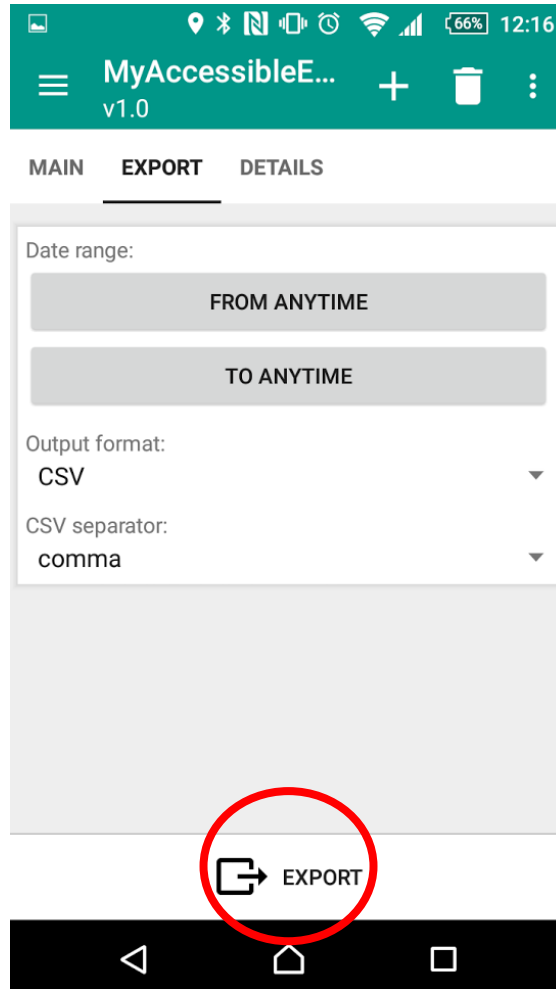
1. Once the receiver is set-up you need to choose how regularly you would like to send data via interval schedule. Once this is set data will be transmitted at regular intervals.



Back-up data from Sapelli

1. In order to back-up the collected data from the Sapelli application, you have to find and open Sapelli on your phone.
2. Follow the steps, select the **My Accessible EU** project, and finally click on the **export** button:





3. Select the “**CSV and comma**” options, and then click **Export**.
4. You will be asked if you wish to delete the exported records. Select no.
5. If you have any trouble please email us at info@mappingforchange.org.uk and we will be glad to help you.

Thank you for your help!